

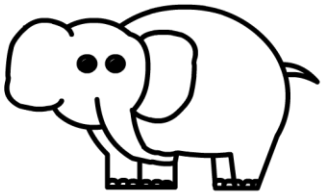


6.

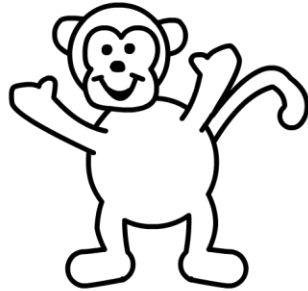
# SLUCHOVÁ ANALÝZA - SYNTÉZA RÝMUJÍCÍ SE DVOJICE

Najdi dvojice obrázků, které se rýmují.

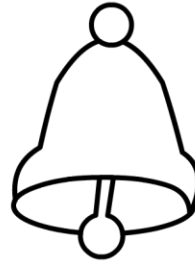
Nejprve si obrázky pojmenuj.



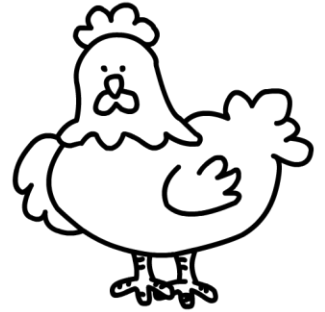
SLON



OPICE



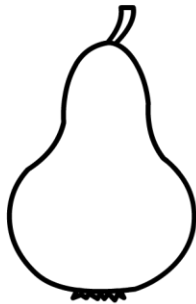
ZVON



SLEPICE



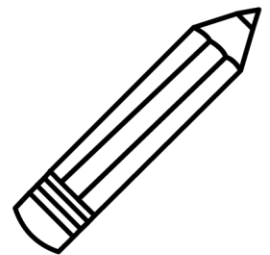
MRAK



HRUŠKA



DRAK



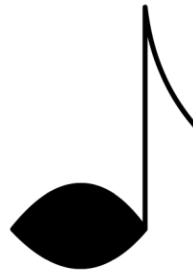
TUŽKA



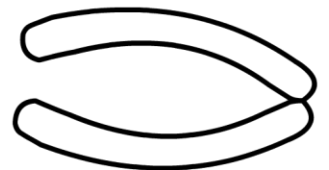
BOTA



DÁRKY



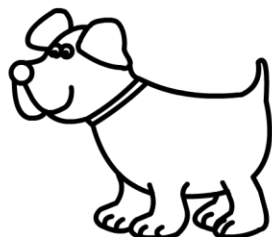
NOTA



PÁRKY



KLÍČ



PES



RÝČ



LES